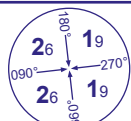


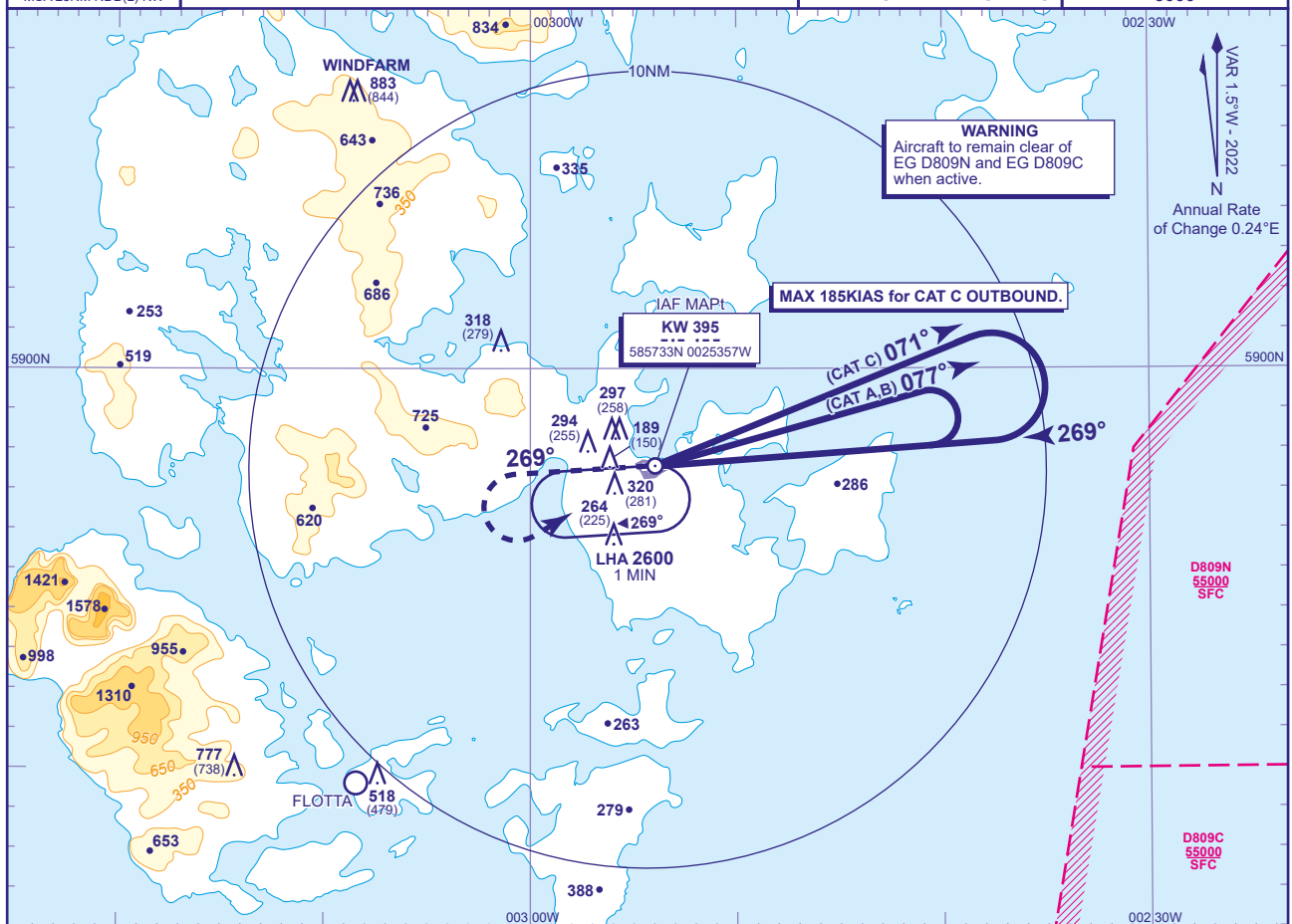
**KIRKWALL  
NDB(L)  
RWY 27**  
(ACFT CAT A,B,C)



MSA 25NM NDB(L) KW

APP	118.305	KIRKWALL APPROACH	AD ELEVATION	58
TWR	118.305	KIRKWALL TOWER	THR ELEVATION	39
AFIS	118.305	KIRKWALL INFORMATION	OBSTACLE ELEVATION	
ATIS	108.600	KIRKWALL INFORMATION	883 AMSL (844) (ABOVE THR)	
			BEARINGS ARE MAGNETIC	

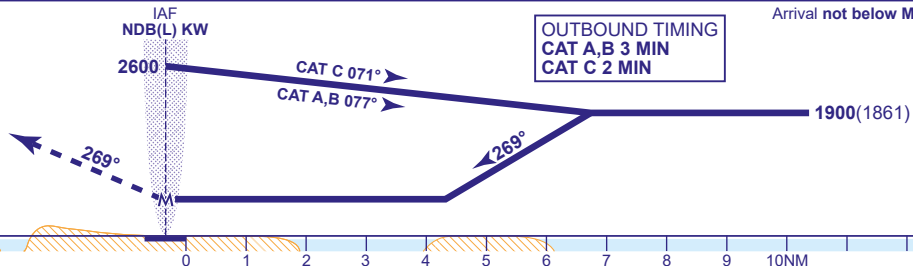
TRANSITION ALTITUDE  
3000



MAPt NDB(L) KW

Climb straight ahead. At **2000** climbing turn left to return to **NDB(L) KW** at **2600** or as directed.

OUTBOUND TIMING  
CAT A,B 3 MIN  
CAT C 2 MIN



Aircraft Category		A	B	C	Rate of descent	G/S KT	160	140	120	100	80
OCA (OCH)	Procedure	680(641)	680(641)	680(641)		FT/MIN	990	870	740	620	500
VM(C)OCA (OCH AAL)	Total Area	650(592)	660(602)	1250(1192)							
	South of RWY 09/27	650(592)	660(602)	760(702)							

**NOTE 1** FAT is parallel to RWY C/L but offset 136 metres north.

**CHANGE (8/21):** MAG VAR. MAG TRACKS. OBSTACLES.

AERO INFO DATE 28 MAY 21

AD 2-EGPA-8-13